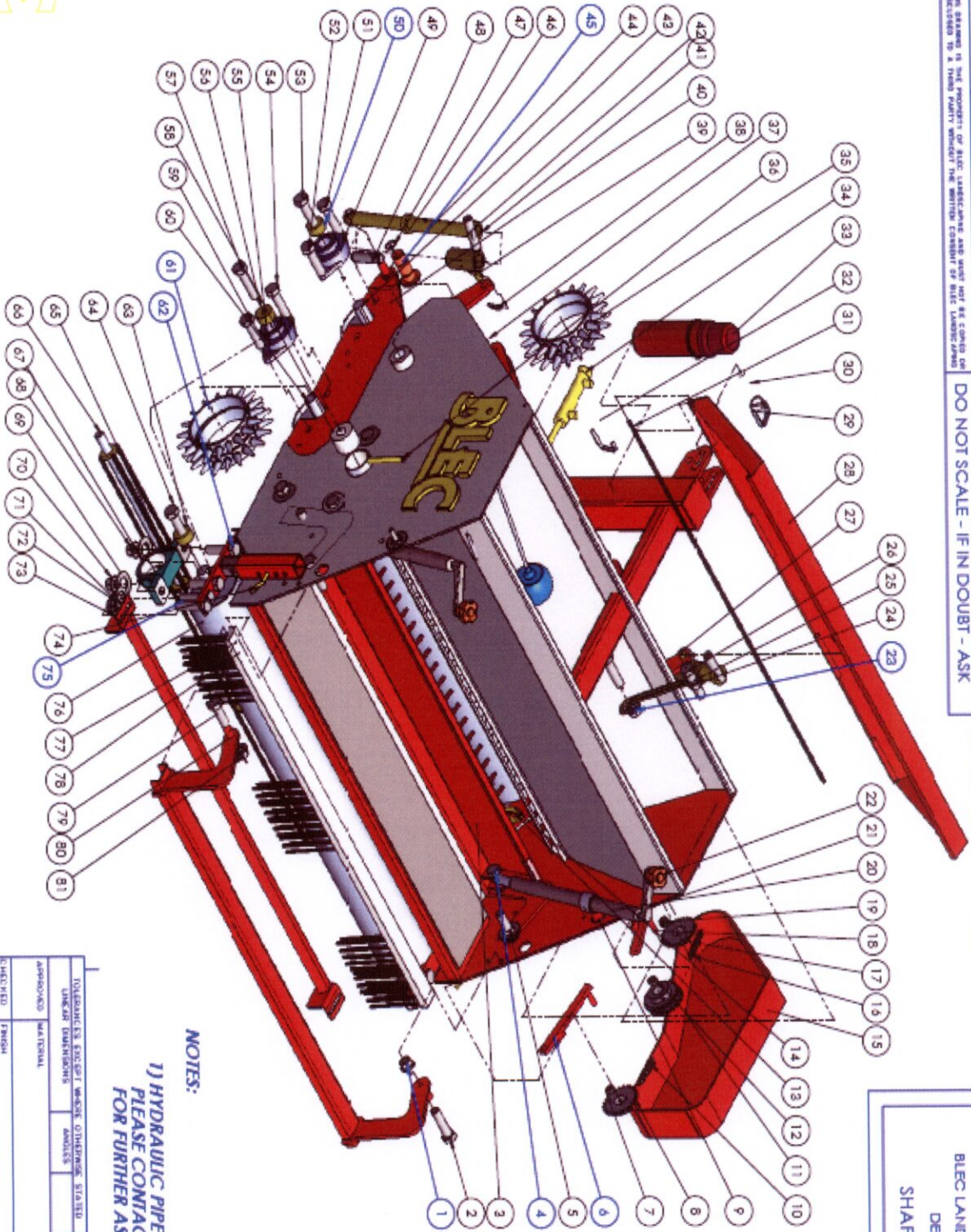




FIRST USED ON: C.A.T. NO.: THIS DRAWING IS THE PROPERTY OF BLEC. UNAUTHORIZED USE AND REUSE OF THIS DRAWING ARE PROHIBITED TO A THIRD PARTY WITHOUT THE WRITTEN CONSENT OF BLEC. CONSTRUCTION

DO NOT SCALE - IF IN DOUBT - ASK

BLEC LANDSCAPING EQUIP. CO. LTD.
DEEPING ST. JAMES
SHAPING THE FUTURE



NOTES:
1) HYDRAULIC PIPEWORK NOT SHOWN
PLEASE CONTACT BLEC LANDSCAPING
FOR FURTHER ASSISTANCE.

SHEET NO.	A			
DATE	23.6.08			
DESIGNED BY				
DRAWN BY				
CHECKED BY				
APPROVED BY				
DATE				
SCALE				
PROJECT NO.				
PROJECT NAME				
CONTRACT NO.				
CUSTOMER				
ADDRESS				
TOWN	BLEC MULTISEEDER2			
PROJECT NO.	XXXXXXXX			
PROJECT NAME				
CONTRACT NO.				
CUSTOMER				

MULTI SEEDER 2 PARTS MANUAL

ILL. NO.	PART NO.	DESCRIPTION	BMS 1000	BMS 1400	BMS 1800	BMS 2100	BMS 2400	BMS 3000
1	BL03113	Nut, M12 Nyloc	2	2	2	2	2	2
2	BL02176	Bolt, M12 x 50	2	2	2	2	2	2
3	BL11E0415	Deflector Plate	1					
	BL11E0415A	Deflector Plate		1				
	BL11E0415B	Deflector Plate			1			
	BL11E0415E	Deflector Plate				1		
	BL11E0415D	Deflector Plate					1	
	BL11E0415F	Deflector Plate						1
4	BL02178	Bolt, M12 x 60	2	2	2	2	2	2
NI	BL03113	Nut, M12 Nyloc	2	2	2	2	2	2
5	BL11E0470	Brush Holder	1					
	BL11E0470A	Brush Holder		1				
	BL11E0470B	Brush Holder			1			
	BL11E0470E	Brush Holder				1		
	BL11E0470D	Brush Holder					1	
	BL11E0470F	Brush Holder						1
6	BL11E0471	Arm, Tensioner	1	1	1	1	1	2
NI	BL11E0208A	Slipper, Chain	1	1	1	1	1	2
NI	BL02186A	Screw, Tensioner	1	1	1	1	1	2
7								
8	BL11E0230A	Sprocket, Seed-	1	1	1	1	1	2
9	BL11E0366A	Pivot, Brush Adj	2	2	2	2	2	2
10	BL04704/33	Chain, Seed Box	1	1	1	1	1	2
11	BL11E0472	Sprocket, Idler (inc	1	1	1	1	1	2
12	BL05091	Bearing	2	2	2	2	2	4
13	BL11E0473	Finger Bar, First	1					
	BL11E0473A			1				
	BL11E0473B				1			
	BL11E0473E					1		
	BL11E0473D						1	
	BL11E0473F							1
	BL11E0474	Finger Bar, 2nd	1					
	BL11E0474A			1				
	BL11E0474B				1			
	BL11E0474E					1		
	BL11E0474D						1	
	BL11E0474F							1

MULTI SEEDER 2 PARTS MANUAL

ILL.	PART NO.	DESCRIPTION	BMS	BMS	BMS	BMS	BMS	BMS
14	BL11E0209	Bottom & Slide	1					
	BL11E0209A	Bottom & Slide		1				
	BL11E0209B	Bottom & Slide			1			
	BL11E0209E	Bottom & Slide				1		
	BL11E0209D	Bottom & Slide					1	
	BL11E0209F	Bottom & Slide						1
NI	BL11E0228A	Cam, Adjuster	1	1	1	1	1	1
NI	BL11E0227B	Seed Rate Adj As-	1	1	1	1	1	1
NI	BL11E0216	Shut off flap	1					
NI	BL11E0216A	Shut off flap		1				
NI	BL11E0216B	Shut off flap			1			
NI	BL11E0216E	Shut off flap				1		
NI	BL11E0216D	Shut off flap					1	
NI	BL11E0216F	Shut off flap						1
NI	BL1150493	Swivel Bush, Ram	1	1	1	1	1	1
15	BL11E0475	Cover, Chain RH	1	1	1	1	1	1
	BL11E0476	Cover, Chain LH						1
16	BL04704/26.5	Chain	1	1	1	1	1	2
17	BL11E0229A	Sprocket	1	1	1	1	1	2
18	BL11E0477	Arm, Tension □	1	1	1	1	1	2
NI	BL02186A	Screw, Tensioner	1	1	1	1	1	2
NI	BL11E0208A	Slipper, Chain	1	1	1	1	1	2
19								
20	BL11E0364A/L	Jack, Brush Adj LH	1	1	1	1	1	1
	BL11E0364A	Jack, Brush Adj	1	1	1	1	1	1
21	BL8646	Float, Seed Level	1	1	1	1	1	1
22	BL04210	Lower Link Pin Cat	2	2				
	BL04211	Lower Link Pin			2	2	2	2
	BL04134	Linch Pin	2	2	2	2	2	2
23	BL03073	Nut, M8 Nyloc	1	1	1	1	1	1
24	BL03073	Nut, M8 Nyloc	1	1	1	1	1	1
25	BL11E0368A	Stay, Lid	1	1	1	1	1	1
26	BL02173	Setscrew, M8 x 25	1	1	1	1	1	1
27	BL11E0478	Main Frame	1					
	BL11E0478A			1				
	BL11E0478B				1			
	BL11E0478E					1		
	BL11E0478D						1	
	BL11E0478F							1

MULTI SEEDER 2 PARTS MANUAL

ILL. NO.	PART NO.	DESCRIPTION	BMS 1000	BMS 1400	BMS 1800	BMS 2100	BMS 2400	BMS 3000
28	BL11E0479	Lid, Seed Box	1					
	BL11E0479A			1				
	BL11E0479B				1			
	BL11E0479E					1		
	BL11E0479D						1	
	BL11E0479F							1
29	BL04252	Top Link Pin Cat 1	1	1				
	BL04254	Top Link Pin Stepped			1	1	1	1
	BL04134	Linch Pin	1	1	1	1	1	1
30								
31	BL11E0480	Rod, Hinge	1					
	BL11E0480A			1				
	BL11E0480B				1			
	BL11E0480E					1		
	BL11E0480D						1	
	BL11E0480F							1
32								
33	HAP136001	Flask, Manual	1	1	1	1	1	1
34	BL01011	Hyd Ram, Shut Off	1	1	1	1	1	1
NI	BLE110481	Sleeve, Ram Rod	1	1	1	1	1	1
NI	BL11E0482	Spring, Ram Rod	2	2	2	2	2	2
35	BL11E0219A	Spiked Ring	A/R	A/R	A/R	A/R	A/R	A/R
	BLI11E0219B	Spiked Ring, Half	A/R	A/R	A/R	A/R	A/R	A/R
NI	BL11E0405A	End Collar	2	2	2	2	2	2
36	BL11E0223A	Tube, Greaser	2	2	2	2	2	2
NI	BL04440	Grease Nipple	2	2	2	2	2	2
37								
38	BL04150	Pin & Clip	4	4	4	4	4	4
39	BL11E0483	Pivot Bracket, Front	1	1	1	1	1	1
	BL11E0492	Pivot Bracket, Front	1	1	1	1	1	1
40	BL11E0484	Frame, Floating Rolls	1					
	BL11E0484A			1				
	BL11E0484B				1			
	BL11E0484E					1		
	BL11E0484D						1	
	BL11E0484F							1
NI	BL02357	Screw, Frame Stop	4	4	4	4	4	4
NI	BL03191	Nut, Locking	4	4	4	4	4	4
41	BL11E0485	Collar, Front Leg	2	2	2	2	2	2
42								

MULTI SEEDER 2 PARTS MANUAL

ILL.	PART NO.	DESCRIPTION	BMS	BMS	BMS	BMS	BMS	BMS
43	BL11E0486	Shaft, Front Floating	1					
	BL11E0486A			1				
	BL11E0486B				1			
	BL11E0486E					1		
	BL11E0486D						1	
	BL11E0486F							1
44	BL11E0487	Front Leg c/w Ball	2	2	2	2	2	2
45	BL11E0488	Pin, Pivot	2	2	2	2	2	2
46	BL11E0489	Spacer, Front Leg	A/R	A/R	A/R	A/R	A/R	A/R
47	BL04935	Circlip 35mm Ext	2	2	2	2	2	2
48								
49	BL05124	Bearing	2	2	2	2	2	2
50	BL11E0397A	End Cap	2	2	2	2	2	2
51	BL02172	Setscrew, 12 x 30	2	2	2	2	2	2
52	BL02712	Setscrew, 12 x 30	2	2	2	2	2	2
53	BL02143	Setscrew, 10 x 35	2	2	2	2	2	2
54	BL02713	Setscrew, 12 x 35	2	2	2	2	2	2
55	BL05124	Bearing	2	2	2	2	2	2
56	BL11E0397A	End Cap	2	2	2	2	2	2
57	BL02143	Setscrew, 10 x 35	2	2	2	2	2	2
58								
59	BL02173	Setscrew, 12 x 35	2	2	2	2	2	2
60	BL11E0490	Shaft, Rear Floating	1					
	BL11E0490A			1				
	BL11E0490B				1			
	BL11E0490E					1		
	BL11E0490D						1	
	BL11E0490F							1
61	BL11E0219A	Spiked Ring	A/R	A/R	A/R	A/R	A/R	A/R
	BLE110219B	Spiked Ring, Half	A/R	A/R	A/R	A/R	A/R	A/R
NI	BL11E0405A	End Collar	2	2	2	2	2	2
62	BL02256	Bolt, 16 x 60	4	4	4	4	4	4
63	BL11E0397A	End Cap	2	2	2	2	2	2
64	BL02143	Setscrews, 10 x 35	2	2	2	2	2	2
65	BI05104	Bearing	2	2	2	2	2	2
66	BL11E0215	Rotor, Seedbox	1					
	BL11E0215A			1				
	BL11E0215B				1			
	BL11E0215E					1		
	BL11E0215D						1	
	BL11E0215F							2
	BL11E0215F							2

MULTI SEEDER 2 PARTS MANUAL

ILL □ NO.	PART NO.	DESCRIPTION	BMS	BMS	BMS	BMS	BMS	BMS
			1000	1400	1800	2100	2400	3000
67	BL03751	Washer, Flat M16	A/R	A/R	A/R	A/R	A/R	A/R
68	BL03153	Nut, M16 Nyloc	A/R	A/R	A/R	A/R	A/R	A/R
69	BL03751	Washer, Flat M16	A/R	A/R	A/R	A/R	A/R	A/R
70	BL03153	Nut, M16 Nyloc	A/R	A/R	A/R	A/R	A/R	A/R
71	BL03711	Washer, Flat M12	A/R	A/R	A/R	A/R	A/R	A/R
72	BI03113	Nut, M12 Nyloc	4	4	4	4	4	4
73	BL11E0201	Scraper, Rear Roll	1					
	BL11E0201A			1				
	BL11E0201B				1			
	BL11E0201E					1		
	BL11E0201D						1	
	BL11E0201F							1
74	BL11E0409A	Pin	2	2	2	2	2	2
	BL04103	"R" Clip	2	2	2	2	2	2
75	BL02174	Bolt, 12 x 40	4	4	4	4	4	4
76	BL11E0222	Rear Roll, Smooth	1					
	BL11E0222A			1				
	BL11E0222B				1			
	BL11E0222E					1		
	BL11E0222D						1	
	BL11E0222F							1
77	BL11E0204	Brush Section	1					
	BL11E0204A			1				
	BL11E0204B				1			
	BL11E0204E					1		
	BL11E0204D						1	
	BL11E0204F							1
78	BL11E0203A	Leg, Rear Roll	2	2	2	2	2	2
79	BL02176	Bolt, M12 x 50	2	2	2	2	2	2
80	BL11E0491	Holder, Rear Brush □	1					
	BL11E0491A			1				
	BL11E0491B				1			
	BL11E0491E					1		
	BL11E0491D						1	
	BL11E0491F							1
81	BL03113	Nut, M12 Nyloc	2	2	2	2	2	2